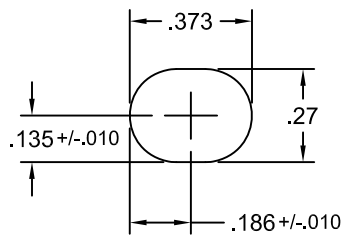
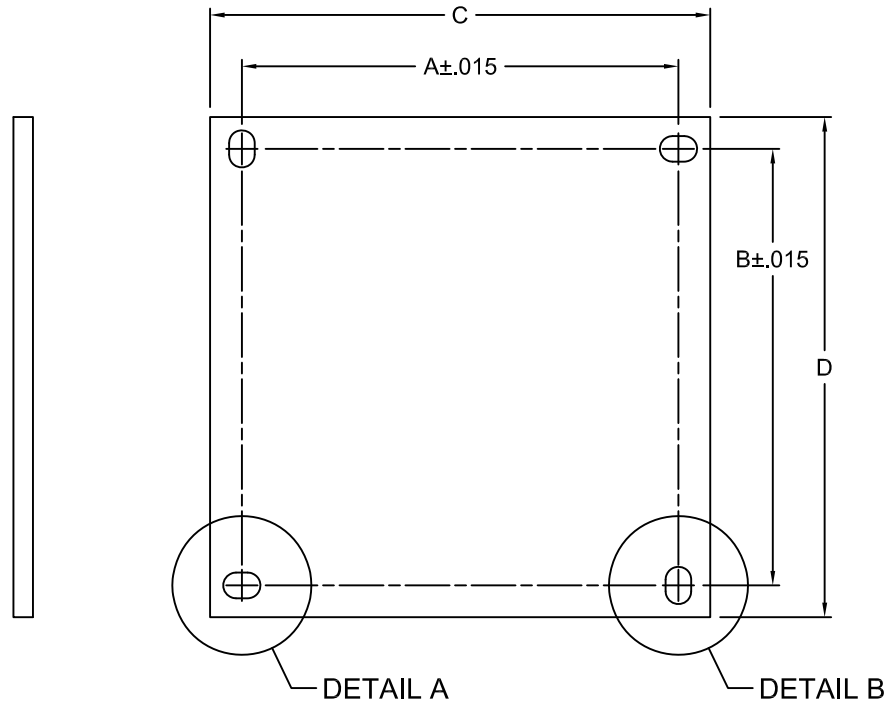
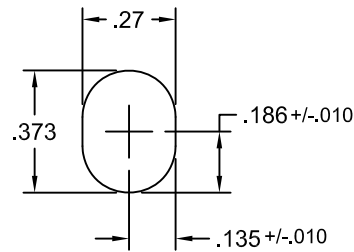


PART NO.	SIZE	A	B	C	D
9912581-15-50	6X6	4.25	4.25	4.88	4.88
9912585-15-50	8X6	4.25	6.25	4.88	6.75
9912584-15-50	8X8	6.25	6.25	6.75	6.88
9912582-15-50	10X8	6.25	8.25	6.88	8.75
9912594-15-50	10X8X2	5.46	7.92	6.80	8.75
9912583-15-50	12X10	8.24	10.24	8.88	10.75
9912588-15-50	14X12	10.25	12.25	10.88	12.75
9912589-15-50	16X14	12.25	14.25	12.88	14.75
9912590-15-50	18X16	14.25	16.25	14.88	16.75



DETAIL A (D)
2 PLACES
SCALE=NONE



DETAIL B (D)
2 PLACES
SCALE=NONE

NOTES:

1. MATERIAL: PVC, GREY, 3/16 THICK
2. FINISH: SMOOTH
3. NO SCRATCHES, GOUGES OR TOOL MARKS PERMITTED.
4. DEBURR ALL SLOTS AND SMOOTH SHARP EDGES.

DIMENSIONS IN INCHES (UNLESS SPECIFIED)

REV	DESCRIPTION	BY	DATE	ECN NO.	FRACTIONAL	TITLE	DATE	DRAWING NUMBER	REV		
D	REV FROM DIA TO SLOT. REV TOLERANCE FROM +/-02 TO +/-015	W.T.	12-10-13	2013-230	DEFAULT TOLERANCES UNLESS SPECIFIED	MUM INDUSTRIES, INC. 7750 TYLER BOULEVARD MENTOR, OHIO 44060	P: 440-268-8155 E: INFO@MUMINDUSTRIES.COM	C	N/A	1 of 1	W.TIDWELL
C	REV DIM FROM 8.25 TO 8.24, 10.25 TO 10.24	W.T.	10-19-12	2012-131	DECIMAL (INCHES)						
B	REVISED HOLE DIA. FROM 0.25 TO 0.29	W.T.	4-30-12		.XX ±.01" .XXX ±.005"						
PROPRIETARY AND CONFIDENTIAL: THE INFORMATION CONTAINED IN THIS/ THESE DRAWING(S) IS/ ARE THE SOLE PROPERTY OF MUM INDUSTRIES, INC. ANY REPRODUCTION IN PART OR AS A WHOLE WITHOUT THE WRITTEN PERMISSION OF MUM INDUSTRIES, INC. IS PROHIBITED.						±1/16" (0.062") ANGLAR ± 1°	07.06.10	99125XX-15-50	D		