

# INTEGRA GIVES YOU AN EDGE IN PROTECTION



**INTEGRA**  
ENCLOSURES

## POLYCARBONATE FEATURES & BENEFITS

- Improved Impact Resistance
- Lighter Weight
- Greater UV Resistance
- Ease of Modification
- More Eco-Friendly
- Rarely Damaged from Shipping & Handling



Integra's enclosure is not like anyone else's. Our superior design, including our use of polycarbonate material, provides an enclosure that is durable, seals tight, supports easy component installation, and looks great.

Integra also maintains an extensive, on hand inventory to support your delivery.

Superior design, fast shipment, and competitive pricing are three benefits that make Integra Enclosures a smart choice for your electrical and telecommunication enclosure needs.

Call us at 440.269.4966 or visit our website [www.integraenclosures.com](http://www.integraenclosures.com) to learn more about Integra Enclosures.

- UL / c-UL Listed
- NEMA 4X, 6P, 12, 13 & Marine Use
- Patent No. 6,604,798
- CE & IP 66/68 Protection
- RoHS
- ATEX (contact factory)



# POLYCARBONATE, THE BETTER TECHNOLOGY.



Technology continues to improve at a very rapid pace. The ability to send and receive information has greatly improved the ability to monitor or control all sorts of applications, creating more applications needing a more advanced electrical enclosure. Just as

electronics has evolved, so has enclosure technology. Polycarbonate represents the next step in the evolution of technology for outdoor, wireless, wastewater treatment, solar, broadband over powerline (BPL), smart grid, and all the traditional non-metallic applications.



## POLYCARBONATE APPLICATIONS

Polycarbonate enclosures are a superior choice for a wide range of outdoor applications and environments:

- **Remote Monitoring** - For remote placement of monitoring or networking devices/components
- **Alternative Energy** - From solar to wind, keep systems safe from the environment
- **Water Treatment** - Water/wastewater treatment and sprinkler systems are well-protected in polycarbonate
- **Utility & Electrical** - Utility applications that are housed outdoor are ideally enclosed in polycarbonate
- **Marine & Marina** - Whether on-ship or at the dock, guard against corrosive salt water and sun

# TABLE OF CONTENTS

About Integra Enclosures .....	2-3
Integra Story .....	4-5
Polycarbonate & Fiberglass Comparison.....	6
Product Line Overview.....	7
Premium Line Overview.....	8-9
Impact Line Overview .....	32-33
Genesis Line Overview.....	44-45
6x6x4 Premium .....	10-11
8x6x4 Premium .....	12-13
8x8x4 Premium .....	14-15
10x8x2 Premium .....	16-17
10x8x4 Premium .....	18-19
10x8x6 Premium .....	20-21
12x10x4 Premium .....	22-23
12x10x6 Premium .....	24-25
14x12x6 Premium .....	26-27
16x14x7 Premium .....	28-29
18x16x10 Premium .....	30-31
4x4x3 Impact .....	34-35
6x6x3 Impact .....	36-37
8x6x3 Impact .....	38-39
9x8x2 Impact .....	40-41
10x8x6 Impact .....	42-43
20x16x08 Genesis .....	46-47
24x24x10 Genesis .....	48-49
Genesis Line Panels.....	50
Genesis Line Option .....	51
Fan Shroud .....	52
Hole Plugs / Cord Grips .....	53
Accessories - Premium Line .....	54-56
Pole Mounting Kits.....	57
Accessories - Impact Line .....	58-59
Accessories - Genesis Line .....	60
Exploded View Assembly Instructions .....	61
Frequently Asked Questions (FAQs).....	62-63
NEMA / UL-50 Type Ratings .....	64
Technical Information /	
Chemical Resistance.....	65-66
Terms & Conditions of Sale .....	67

# THE UNSURPASSED ADVANTAGES OF POLYCARBONATE ENCLOSURES



## UV Protection

Fiberglass enclosures will “bloom” when exposed to sunlight and moisture. In fact, manufacturers of FRP

enclosures recommend painting their products. This is not necessary with Integra thermoplastic enclosures.

Outdoor UV exposure ratings for both the Premium and Impact lines are F1. See Engineering Properties on page 48 for more details.



## Impact Resistance

The engineered thermoplastic enclosure has dramatically

better impact resistance. For example, fiberglass typically has an impact resistance of less than 220 lb/in, while the Premium and Impact line enclosures have an impact resistance of over 900 lb/in.



## Ease Of Modification

Thermoplastic enclosures are much easier and safer to machine, with none of the dust and splintering associated with fiberglass.

# THE INTEGRA STORY



**INTEGRA**  
ENCLOSURES

## Why Integra

If you are working on a new design that requires a NEMA 12/4X/6P, UL listed enclosure, here are some reasons you will want to consider Integra...

- Our aesthetics will provide a unique new look for your products, making them stand out from the competition.
- At Integra, all we do is thermoplastic enclosures. We are focused on your specific requirements.
- Integra offers a full range of modification services, delivering enclosures to you ready to install components.
- Available factory-direct, Integra enclosures are shipped on your schedule.



**Manufactured, Assembled and stocked in Mentor, OH, USA**

Integra Enclosures manufactures and markets engineered thermoplastic enclosures designed for use in electrical construction, water treatment, car wash, telecommunication, instrumentation, utility, machine building, HVAC, or any other application requiring enclosures which are non-corrosive, non-conductive, easy to install and modify, and competitively priced.

Integra Premium Line Enclosures all share the patented Integra Panel Suspension System which allows infinite range of motion of a panel within the enclosure. This feature, along with several other design improvements over existing products, makes Integra an exciting alternative to the traditional suppliers in the market.

Offering the best designs coupled with superior customer service, Integra is uniquely positioned to serve your enclosure needs.



## THE MOST WELL THOUGHT OUT ENCLOSURE AVAILABLE

Super versatile, the enclosure panel suspension system in all of the Premium Line enclosures offers unsurpassed options for mounting back panels, face plates, circuit boards or any other component that needs to be secured. This feature, along with a wide selection of off-the-shelf accessories, allows extreme customization using standard products. Additional features:

- Rear-mounting bosses
- Swing panel
- Foot or flange mounting
- Clear lids
- Removable enclosure door
- Panel suspension
- DIN rails pre-cut for each enclosure size
- Vents for air flow
- Many other options

## FACTORY MODIFICATIONS.

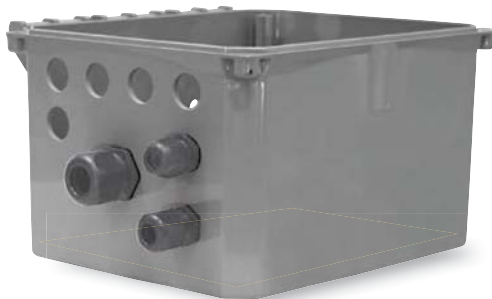
OUR PRODUCT, THE WAY YOU LIKE IT.



At Integra, most of our customers prefer to let us modify their enclosures prior to shipment on our CNC Machines. Drawings of all standard products are available for download off the Integra website.

Our newly-expanded manufacturing facility can handle your needs for:

- Drilling Holes
- CNC machine cut outs
- Silkscreen
- Graphic panels
- Custom enclosures
- Custom colors (minimum quantity)
- Custom back panels



## STANDARD PRODUCTS



## MODIFIED PRODUCTS



## SPECIAL PRODUCTS

Minimum quantity may apply



## CUSTOM PRODUCTS

Minimum quantity may apply

