

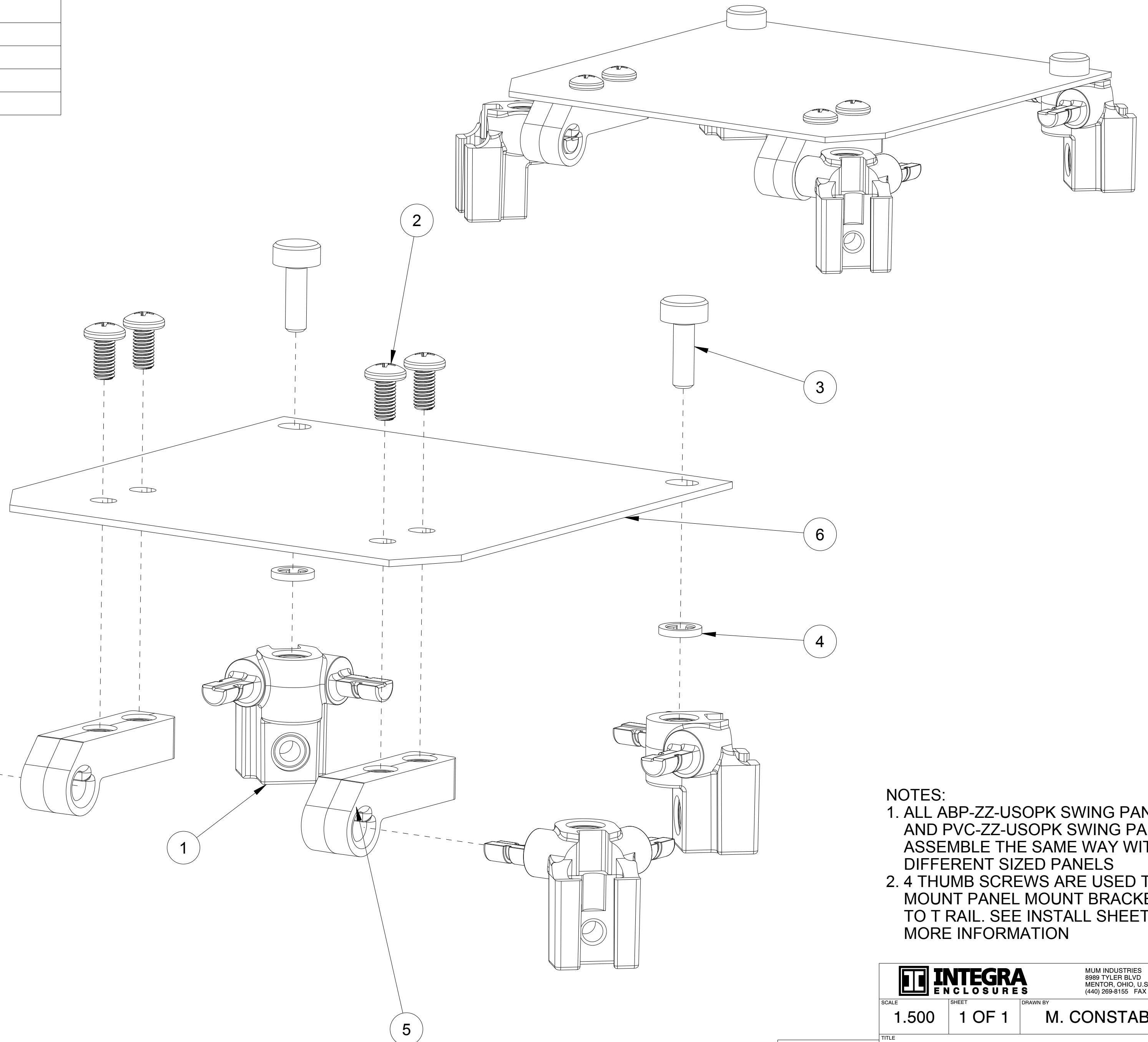
4

3

2

1

ITEM NO.	DESCRIPTION	QTY.
1.	PANEL MOUNT BRACKET	4
2.	PAN HEAD SCREW	4
3.	THUMB SCREW	2
4.	WASHER	2
5.	SWING HINGE ARM	2
6.	PANEL	1



NOTES:
 1. ALL ABP-ZZ-USOPK SWING PANELS AND PVC-ZZ-USOPK SWING PANELS ASSEMBLE THE SAME WAY WITH DIFFERENT SIZED PANELS
 2. 4 THUMB SCREWS ARE USED TO MOUNT PANEL MOUNT BRACKET TO T RAIL. SEE INSTALL SHEET FOR MORE INFORMATION

		MUM INDUSTRIES 8989 TYLER BLVD MENTOR, OHIO, U.S.A. (440) 269-8155 FAX (440) 269-8166	
SCALE	SHEET	DRAWN BY	
1.500	1 OF 1	M. CONSTABLE	
TITLE			
GENERIC KIT-PANEL-SWING			
DATE	DRAWING NUMBER	REV	
10.15.2021	XXX-ZZ-USOPK	A	

UNLESS OTHERWISE SPECIFIED:
 DIMENSIONS ARE IN INCHES (mm)
 AND ARE NOMINAL ONLY
 PROPRIETARY AND CONFIDENTIAL:
 THE INFORMATION CONTAINED IN THIS
 DRAWING IS THE SOLE PROPERTY OF
 INTEGRA ENCLOSURES. ANY
 REPRODUCTION IN PART OR AS A
 WHOLE WITHOUT THE WRITTEN
 PERMISSION OF INTEGRA
 ENCLOSURES IS PROHIBITED.

4

3

2

1