

4

3

2

1

D

D

C

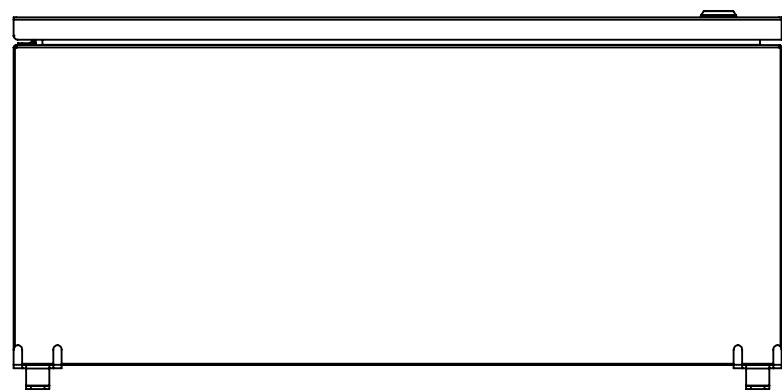
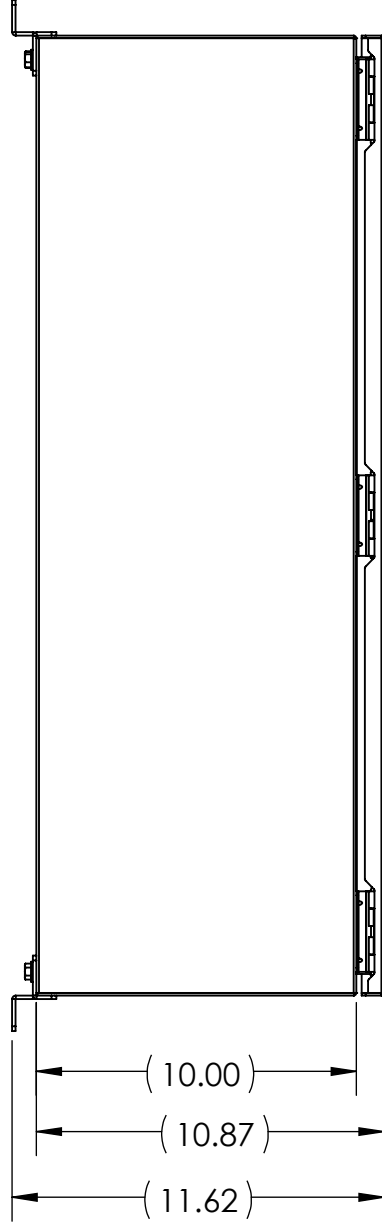
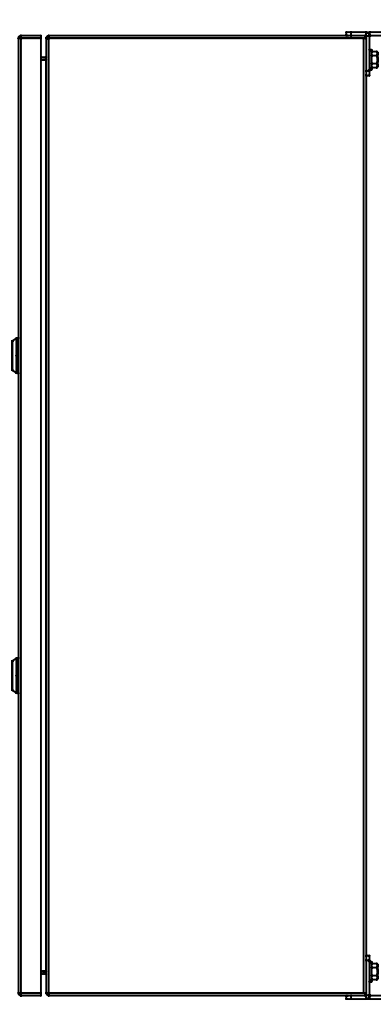
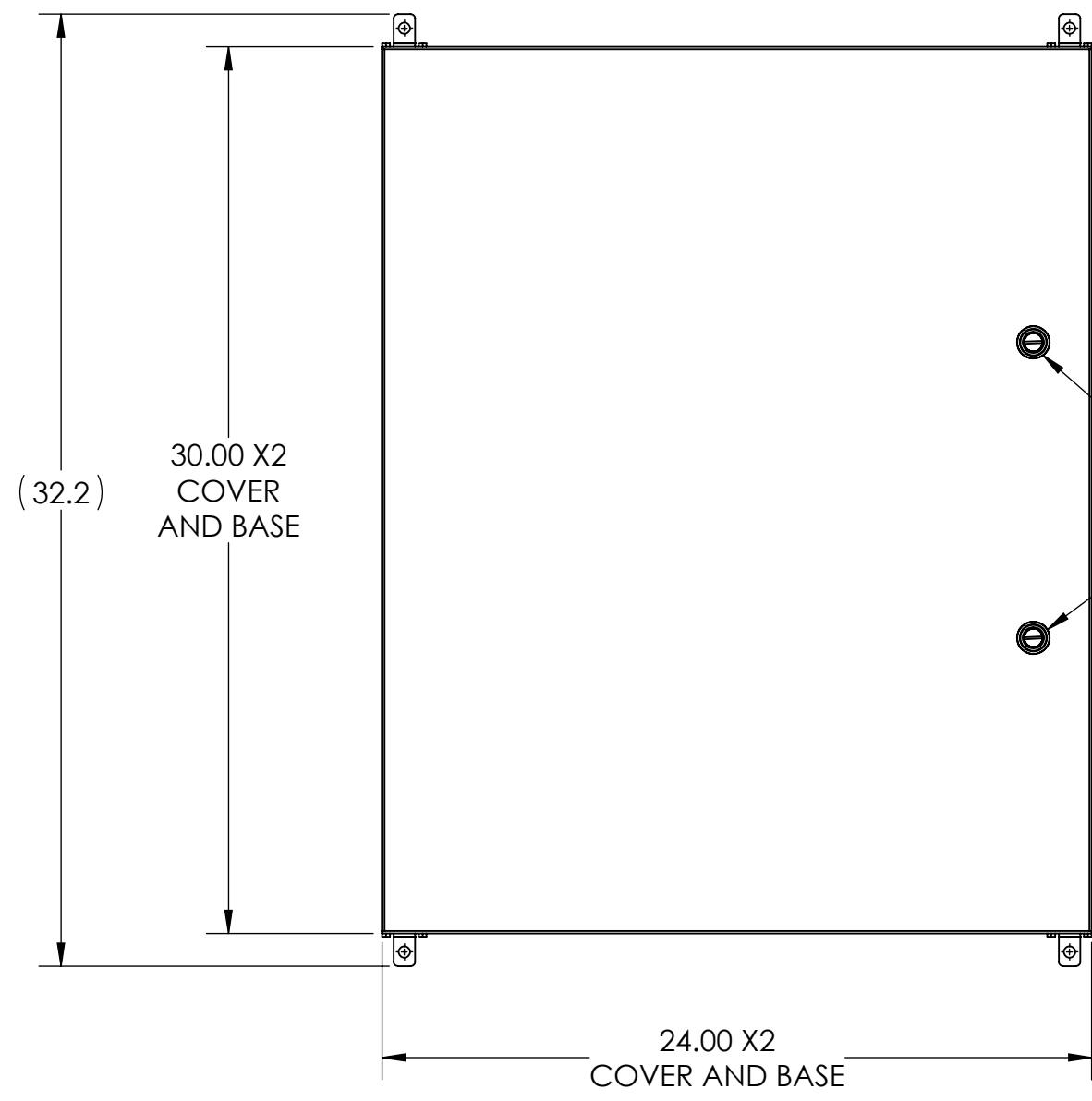
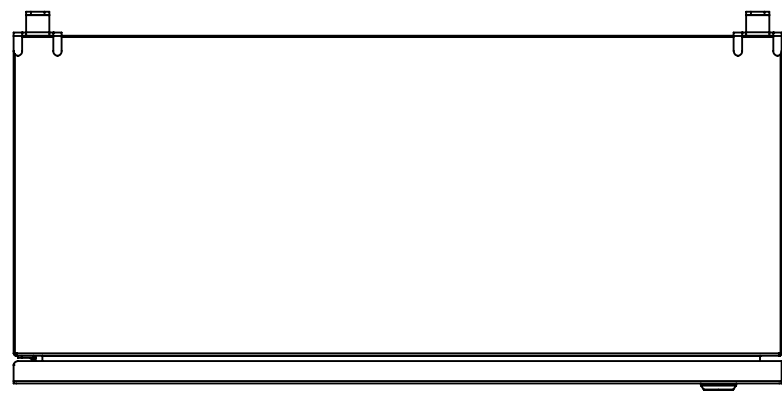
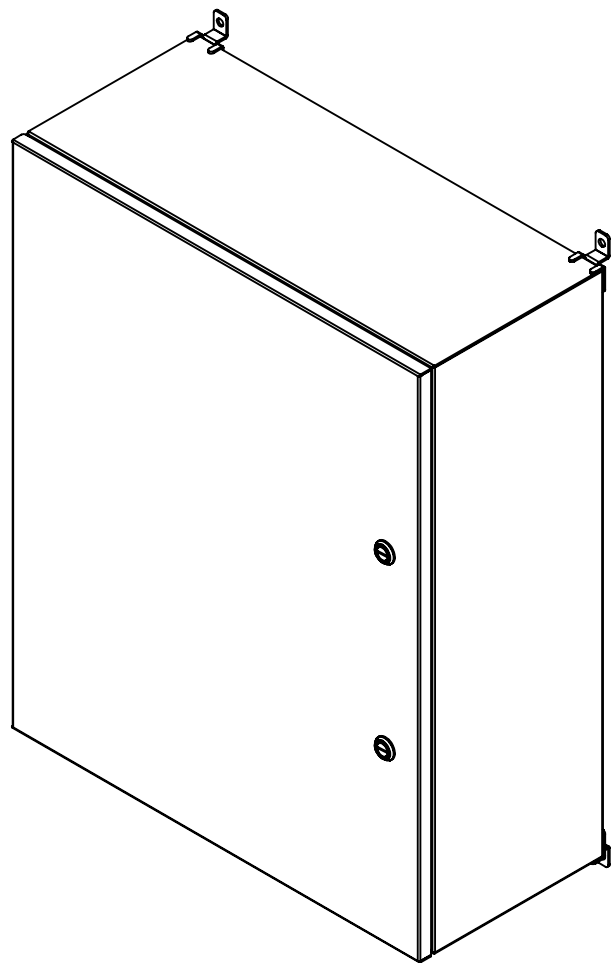
C

B

B

A

A



- NOTES:
1. BASE MATERIAL: 14 Ga. (.075") 304 SS
 2. COVER MATERIAL: 14 Ga. (.075") 304 SS

INTEGRA ENCLOSURES
A DIVISION OF MUM INDUSTRIES
 8989 TYLER BLVD. MENTOR, OH
 ENCLOSURES (440)269-8155 FAX (440)269-8166

UNLESS OTHERWISE SPECIFIED: DIMENSIONS ARE IN INCHES [MM] AND ARE NOMINAL ONLY	DWG. NO. W302410-4PQ-BT	
	SIZE C	DESCRIPTION: WALL-30X24X10-304- PHN-QTL
PROPRIETARY AND CONFIDENTIAL THE INFORMATION CONTAINED IN THIS DRAWING IS THE SOLE PROPERTY OF MUM INDUSTRIES INC. ANY REPRODUCTION IN PART OR AS A WHOLE WITHOUT THE WRITTEN PERMISSION OF MUM INDUSTRIES INC. IS PROHIBITED.	REV D	SCALE: 1:6
DRAWN BY: DLA 05.26.2021	WEIGHT:	SHEET 1 OF 2

4

3

2

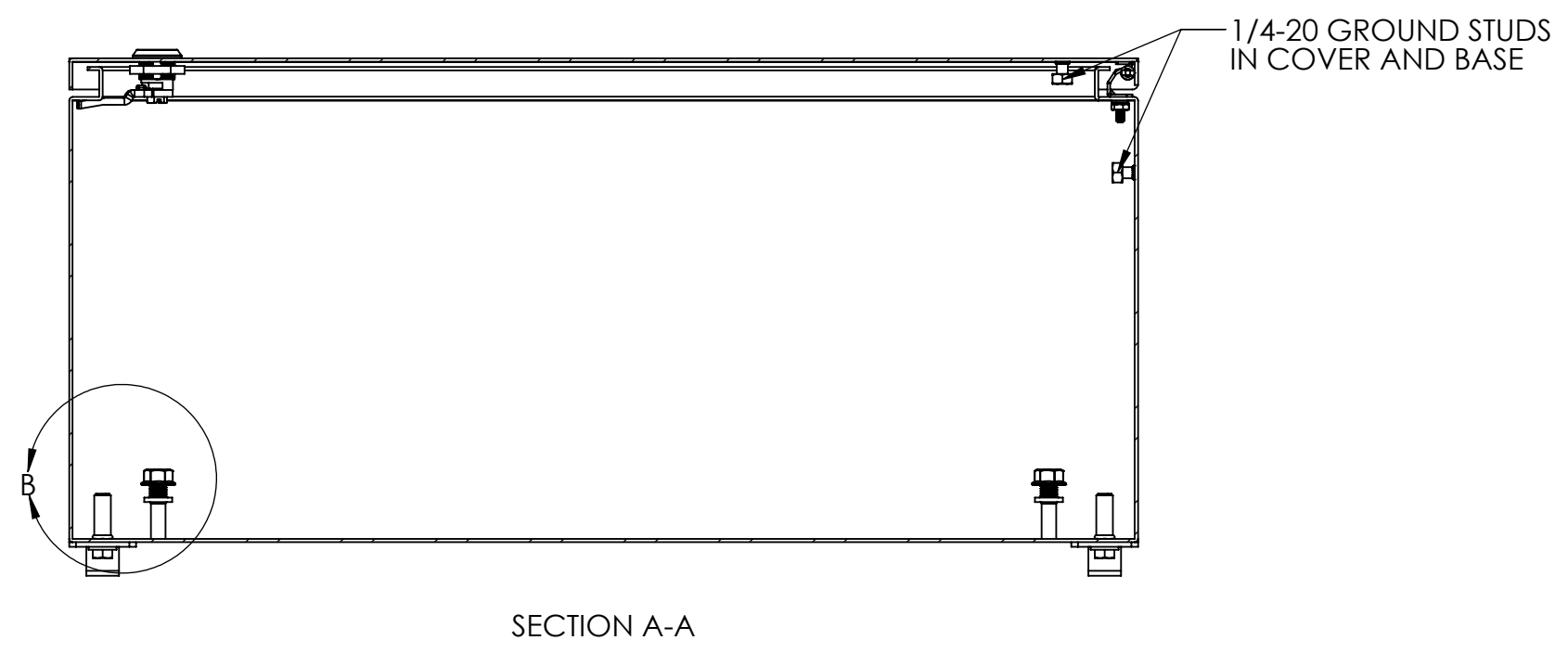
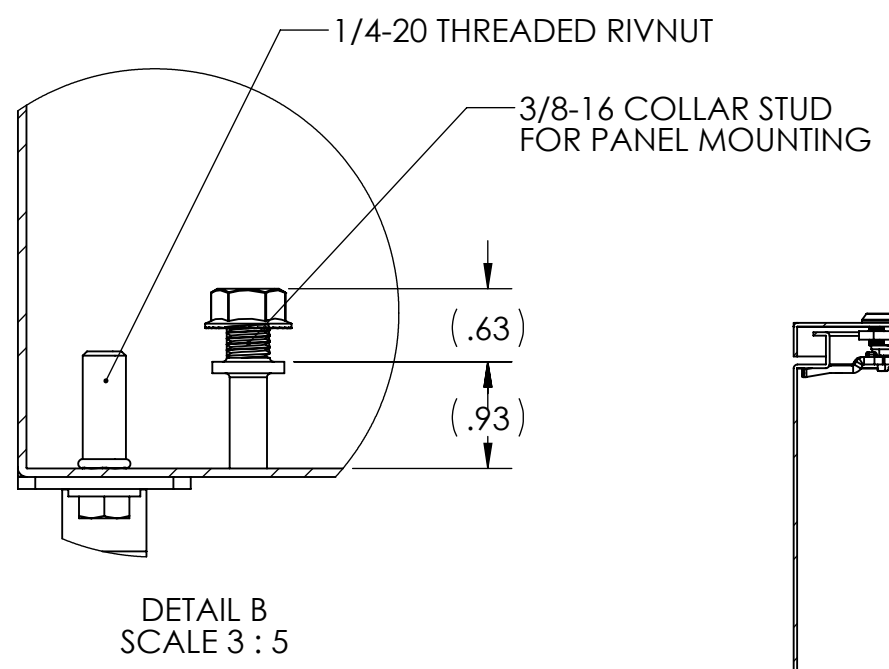
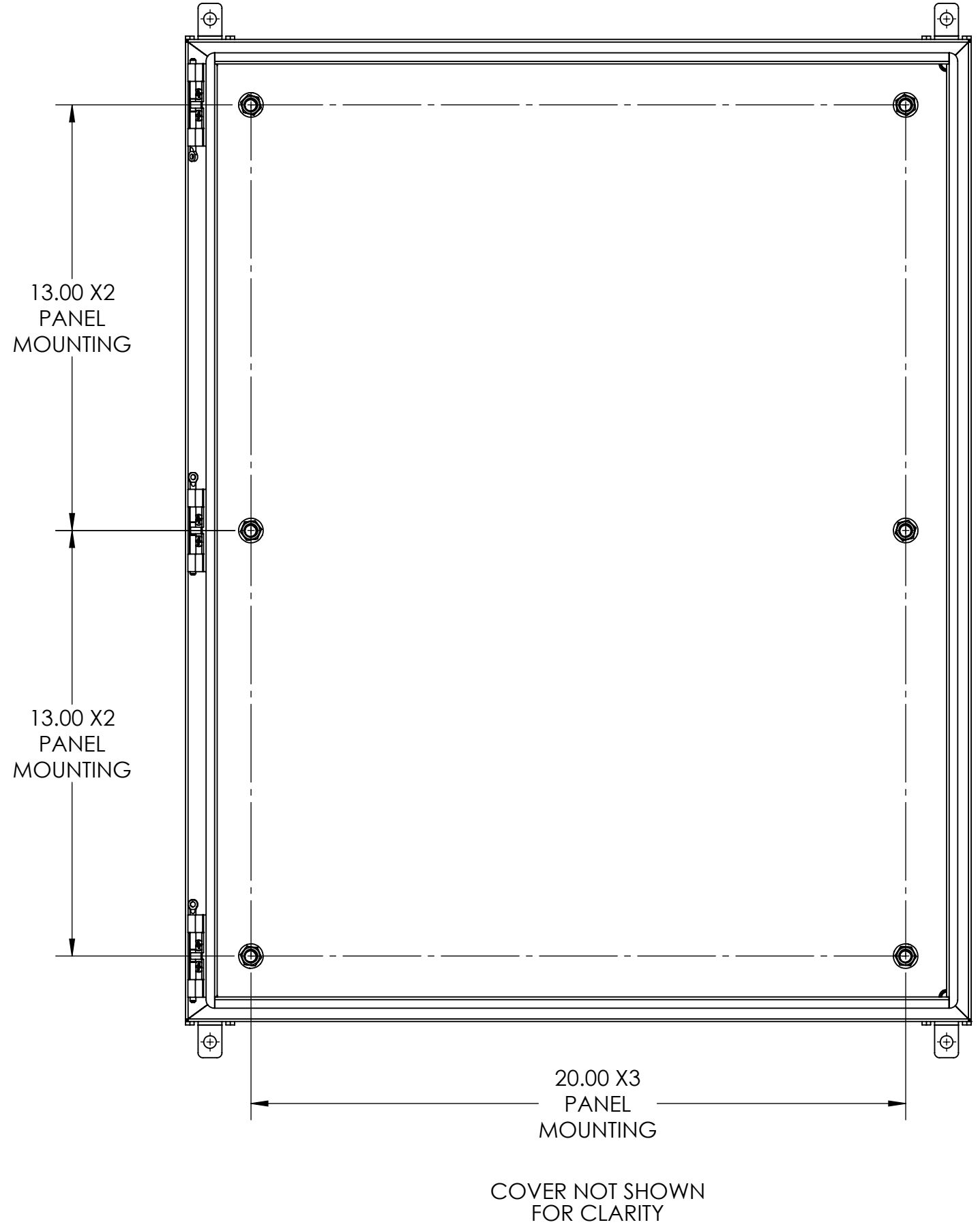
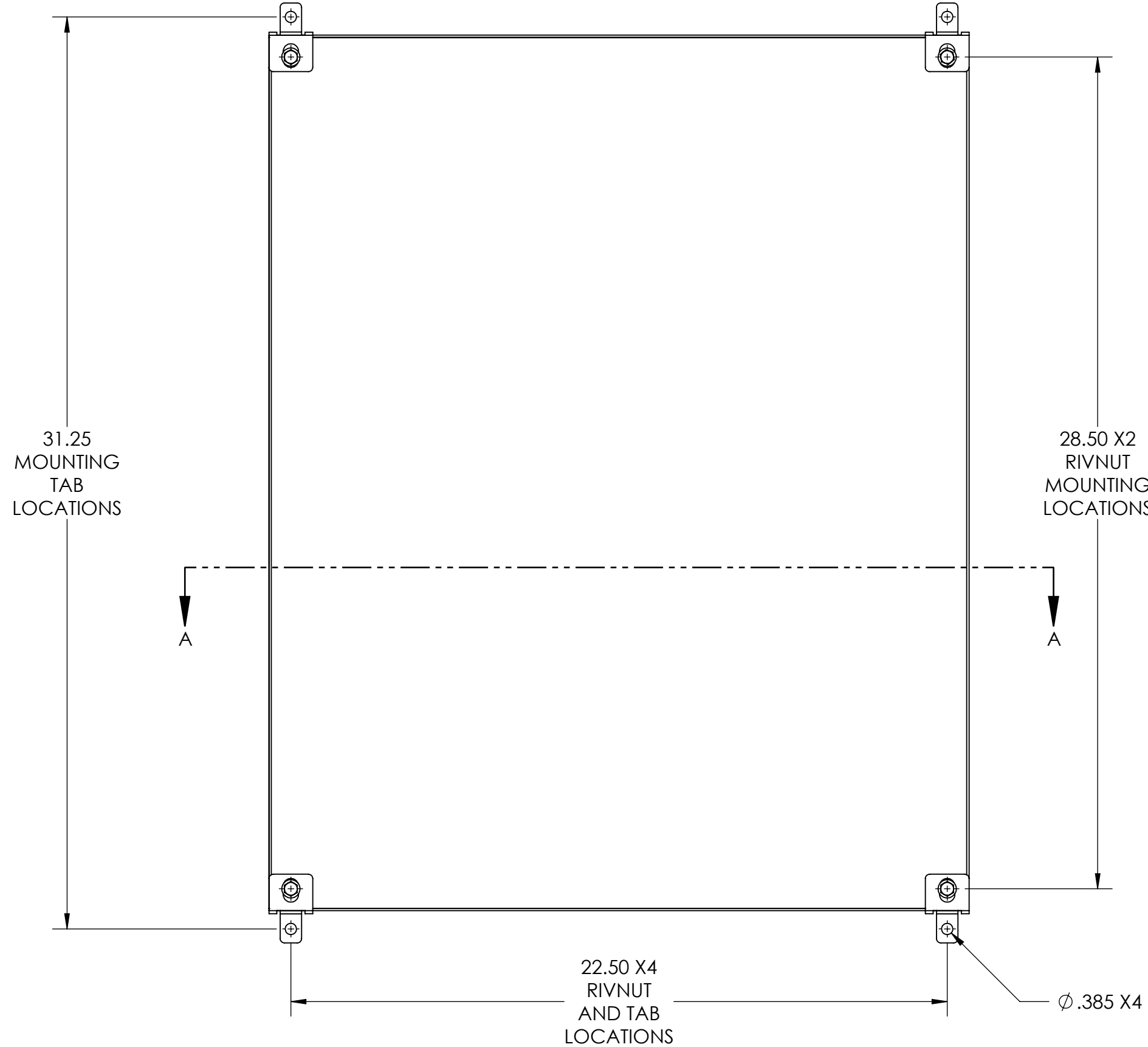
1

4

3

2

1



INTEGRA ENCLOSURES
 A DIVISION OF MUM INDUSTRIES
 8989 TYLER BLVD. MENTOR, OH
 ENCLOSURES (440)269-8155 FAX (440)269-8166

UNLESS OTHERWISE SPECIFIED: DIMENSIONS ARE IN INCHES [MM] AND ARE NOMINAL ONLY	DWG. NO. W302410-4PQ-BT	
	SIZE C	DESCRIPTION: WALL-30X24X10-304- PHN-QTL
PROPRIETARY AND CONFIDENTIAL THE INFORMATION CONTAINED IN THIS DRAWING IS THE SOLE PROPERTY OF MUM INDUSTRIES INC. ANY REPRODUCTION IN PART OR AS A WHOLE WITHOUT THE WRITTEN PERMISSION OF MUM INDUSTRIES INC. IS PROHIBITED.	REV D	
DRAWN BY: DLA 05.26.2021	SCALE: 1:4	WEIGHT: SHEET 2 OF 2

4

3

2

1