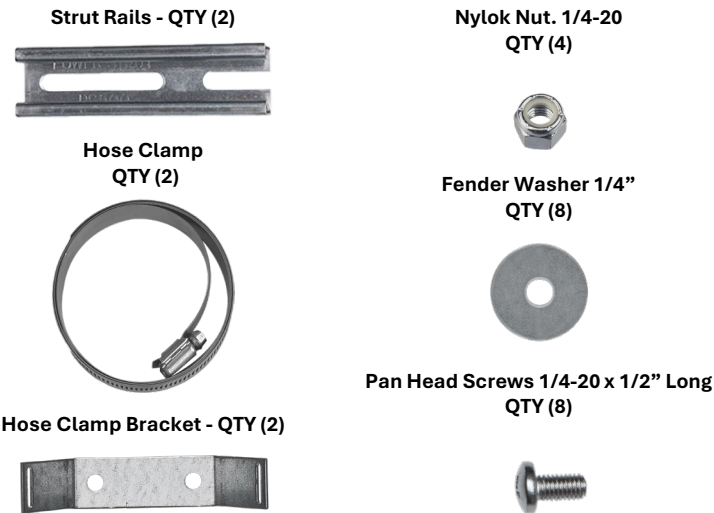


P/N: PMKG-PREMIUM PREMIUM POLE MOUNTING ADJUSTABLE CLAMP KIT

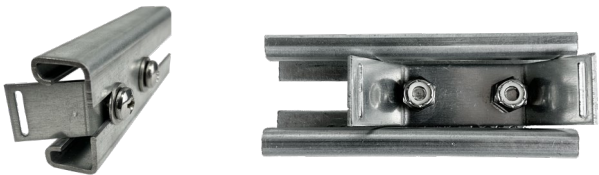
Installation Instructions:

The kit consists of the following components:



1. Attach the Hose Clamp Bracket to the inside of the Strut Rail. Use the 1/2" Pan Head Screw, Fender Washer, and Nylok Nut to secure.

Note: Torque to 32 in-lbs Max.



2. Attach rails to enclosure by placing washer over mounting bosses and secure with Pan Head Screw.

Note: Torque to 32 in-lbs Max.



3. Feed Hose Clamp through slots of the Bracket. Wrap Hose Clamp around pole and tighten.

