



A Division of MUM Industries

P/N: PMKG-IMP WITH TIE IMPACT POLE MOUNTING KIT

Installation Instructions:

The kit consists of the following components:

Mount Adapter
Black - QTY (2)



Button Head Screw
1/4-20 x 3/4" Long - QTY (2)



Nylok Nut. 1/4-20
QTY (2)



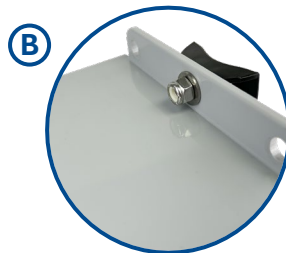
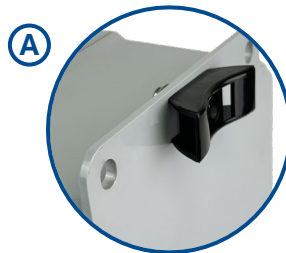
Flat Washer 1/4"
QTY (2)



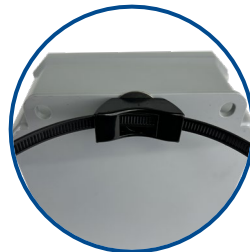
Tie Wrap, Black- QTY (2)



1. Insert Button Head Screw through Mounting Adapter on the backside of the enclosure. Align with Washer and Nylock Nut on opposite side and tighten.



2. Feed Tie Wrap through slots in Mount Adapter.



3. Wrap Tie Wrap around pole and tighten.



Integra Enclosures, Ltd.

8989 Tyler Blvd | Mentor, OH 44060 | Phone: 440-269-4966 | Fax: 440-269-4977 | www.integraenclosures.com | INST-SHT-IMP-TIE_REV_C